

# *Beverage Duty MGS<sup>®</sup> Speed Reducers*

*The Most Reliable Drive Solution for Your  
Demanding Applications!*



**1 Hour  
QUOTE**

**STANDARD  
3-DAY  
DELIVERY**



# STÖBER

**WE KEEP THINGS MOVING**

STOBER Drives Inc. is proud to offer our quality-proven MGS Beverage Duty speed reducer with an industry leading five year warranty. The adaptability of the well known double wobble free bushing makes this the unit to use in the toughest applications.

The features of the **LONG LIFE** MGS Beverage Duty unit are:

- 5 Year Warranty
- Improved Input
- Synthetic Oil
- Application Specific Mounting Position



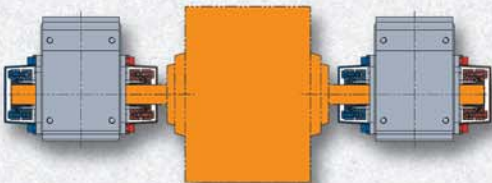
**5 YEAR WARRANTY**  
 Optional

Long Life Part No. Example:

**K302WG0100MR160/140BLL E12 WFB3-108**

- **K302** – Right Angle (**K**), Unit Size **3, 02** – Double Reduction
- **W** – Wobble Free Bushing
- **G** – Tapped Holes Housing
- **0100** – Ratio 0100 (10:1)
- **MR160/140** – Motor Adapter Size for NEMA 143/145TC
- **B** – Beverage Duty Paint
- **LL** – Long Life (5 Year Warranty)
- **E12** – Mounting Position **MUST BE SPECIFIED** (See below.)
- **WFB3-108** – 1½ bore bushing

Bushing mounts from either side.

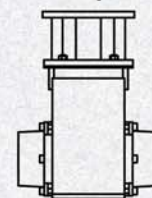
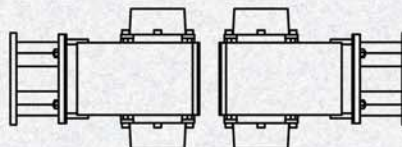
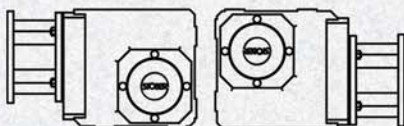


Designed for application specific mounting position.

**E12**

**E34**

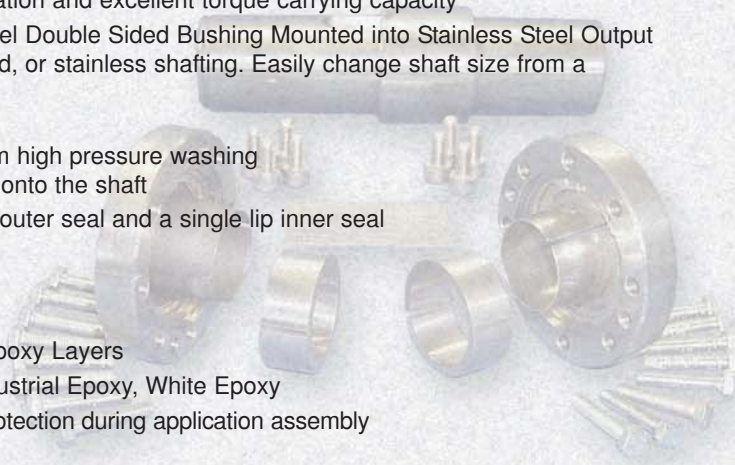
**EL5**



# The **STOBER** difference = **VALUE** for you!

The **STANDARD** MGS Beverage Duty unit is:

- Lubricated for Life
- Maintenance Free
- Totally Enclosed – no breather to allow contaminants in or oil out.
- 3 Year Warranty – your guarantee of our confidence in the MGS (Modular Gear System) line of reducers
- 97% Efficiency – for high quality and reliability plus cost savings in energy and maintenance
- NEMA C-face Input
  - O-ring between the motor and reducer
  - Easy mount maintenance free coupling
- Stainless Steel Nameplate with Customer Identification Number
- High quality helical gearing is case hardened to 58-62 Rockwell C. Precision finished for low noise and long service life.
- High efficiency spiral bevel gearing provides quiet operation and excellent torque carrying capacity
- Patented (U.S. Patent Number 5,496,127) Stainless Steel Double Sided Bushing Mounted into Stainless Steel Output Quill – easily mounts onto standard cold finished, ground, or stainless shafting. Easily change shaft size from a variety of sizes available – inch and metric.
- Bushing Covers Meet Safety Standards
  - Outside Closed Cover Cap – to protect seals from high pressure washing
  - Inside Split Cover Cap – enables easy assembly onto the shaft
- Double Seals on Both Sides of Output – with a dual lip outer seal and a single lip inner seal
- **ALL** Stainless Steel Hardware
- Any Horizontal Mounting **WITHOUT** Changing Oil Level
- Beverage Coating – 1, Primer Layer  
 2, Industrial 316 Stainless Steel Epoxy Layers  
 Optional Coating – Ultra Clear Industrial Epoxy, White Epoxy
- Nylon bolts on Side 1 (bottom) and Side 5 (shown) for protection during application assembly
- Available also as “C” Series Concentric Helical

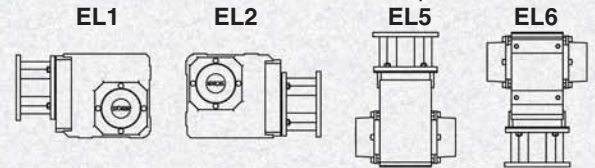


| Standard Bushing Bore Sizes |   |
|-----------------------------|---|
| <b>WFB1</b>                 | 1, 25mm   |
| <b>WFB2</b>                 | 1-1 <sup>3</sup> / <sub>16</sub> , 30mm                                 |
| <b>WFB3</b>                 | 1-1 <sup>1</sup> / <sub>2</sub> , 30, 35mm                              |
| <b>WFB4</b>                 | 1-1 <sup>1</sup> / <sub>2</sub> , 40mm                                  |
| <b>WFB5</b>                 | 17 <sup>1</sup> / <sub>16</sub> - 2, 40mm                               |
| <b>WFB6</b>                 | 17 <sup>1</sup> / <sub>16</sub> - 2 <sup>3</sup> / <sub>16</sub> , 40mm |
| <b>WFB7</b>                 | 1 <sup>15</sup> / <sub>16</sub> - 2 <sup>3</sup> / <sub>8</sub>         |
| <b>WFB8</b>                 | 2 <sup>3</sup> / <sub>16</sub> - 2 <sup>3</sup> / <sub>4</sub>          |



**3 YEAR WARRANTY**  
 Standard

Mounts in ANY HORIZONTAL Output Position

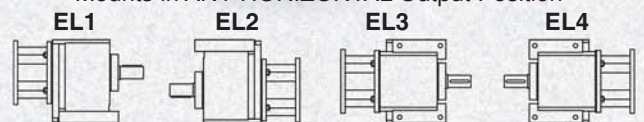


Standard Part No. Example:

**K302WG0100MR160/140B WFB3-108**

- **K302** – Right Angle (**K**), Unit Size **3, 02** – Double Reduction
- **W** – Wobble Free Bushing
- **G** – Tapped Holes Housing
- **0100** – Ratio 0100 (10:1)
- **MR160/140** – Motor Adapter Size for NEMA 143/145TC
- **B** – Beverage Duty Paint
- **WFB3-108** – 1<sup>1</sup>/<sub>2</sub> Bore Bushing

Mounts in ANY HORIZONTAL Output Position





STOBER® Drives, Inc.  
1781 Downing Drive, Maysville KY 41056  
Phone: 606 759-5090, FAX: 606 759-5045, Toll Free: 800 711-3588  
Web: www.stober.com, E-mail: sales@stober.com

MGS®, STOBER®, ComTrac®, and ServoFit® are registered trademarks of STOBER Drives, Inc.  
Form No. 3020, Copyright August 2009, Printed in U.S.A.

